


Use Wallcovering
Content 100% Vinyl (without Harmful Phthalates)
Backing Cotton, Scrim
Cleaning Water-based (W)
Weight 30 ounces/linear yard
Width 52 inches (132 cm)
Hanging Method Reverse Hang, Random Match
Flammability ASTM E 84 Adhered Class A
Lightfastness 40 hours
Wallcovering Classification Type II
ACT 
Sustainable Logistics Ships Carbon Neutral
Warranty 10 years
Origin United States



Foam
6741-101



Quarry
6741-102



Quicksand
6741-103



Coal
6741-104



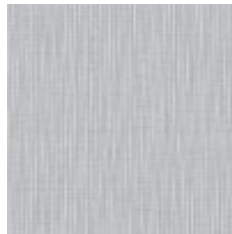
Basket
6741-201



Rose
6741-301



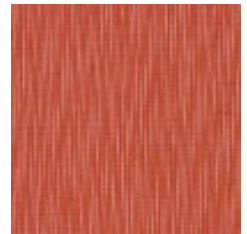
Skylight
6741-401



Shore
6741-402



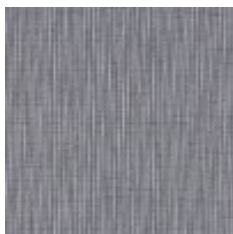
Seaside
6741-403



Satsuma
6741-701



Moon
6741-801



Dock
6741-802