


Use Wallcovering
Content 100% Vinyl (without Harmful Phthalates)
Backing Cotton, Scrim
Cleaning Water-based (W)
Weight 30 ounces/linear yard
Width 52 inches (132 cm)
Hanging Method Straight Hang, Random Match
Flammability ASTM E 84 Adhered Class A
Lightfastness 40 hours
Wallcovering Classification Type II
ACT 
Sustainable Logistics Ships Carbon Neutral
Warranty 10 years
Origin United States



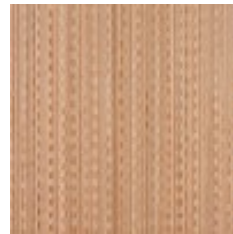
Tatami
6733-101



Mineral
6733-102



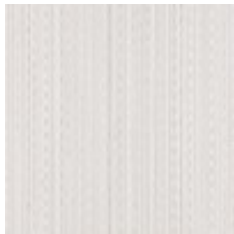
Boulder
6733-103



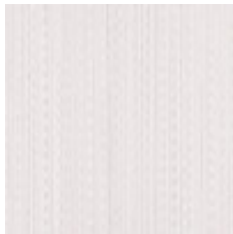
Copper
6733-104



Golden
6733-201



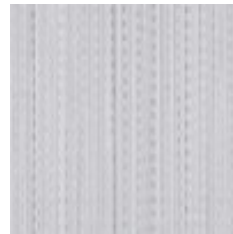
Champagne
6733-801



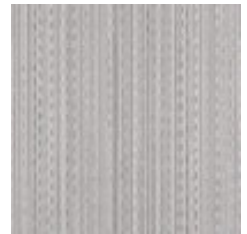
Basmati
6733-802



Haze
6733-803



Mirage
6733-804



Steel
6733-805



Elephant
6733-806



Kohl
6733-807